

de Havilland Scale Modellers



DH Scale

The Official Magazine of the deHavilland Scale Modellers

Edition 39 October 2009

1/76 Airfix Centurion

By Iain Fraser

Build Bytes:

1/72 Ki-84 Hayate

Also:

*2009 US
Nationals*

DH Scale



DH Scale

39th Edition
Oct 2009

No Summer Holiday for Wayne's Winning Ways

In August, while most of us took summer vacation, our champion Wayne Bowman headed south to collect awards at the US Nationals in Columbus, Ohio. Wayne acquired 4 awards for three models. His 1/72 Ariete tank won a 1st in its class, his 1/72 Panzer 38t won a "Premiere" award and his 1/72 AF-1 Skyhawk won a 3rd in its class plus the "Best Skyhawk" award.

In September, Wayne headed to Ottawa and Capcon to collect more awards with his prize-winning collection. This time his Ariete won a 1st in its class, his Panzer 38t won a 2nd in its class and his AF-1 Skyhawk won 1st in class and "Best Aircraft of Show. Well done!



In This Issue:

On The Table: June and September meetings
From the Field: IPMS USA Nationals



On The Table: The June Meeting



< Iain Fraser's 1/76 Centurion. Iain altered the Airfix Mk 8 kit to the Canadian Mk 5/2 standard. He scratch built the travel lock, stowage bin, smoke dischargers, gun and the tow cables. The painting was a custom mix of Tamiya acrylics with oil washes, chalk pastels and a Deck Tan dusting spray for weathering.

Next up we have Derek Pennington's 1/32 Williams Bros. kit of Frank Fuller's P-35 Seversky that won the 1939 Bendix Race. (The last year it ran prior to WW II.)



Terry Cooper displayed a 1/72 Hasegawa P-47 Thunderbolt in Brazilian Air Force markings, and a colourful Nakajima Ki.84 Hayate (Frank) of the IJAAF.

Check out Terry's build article later in this issue.

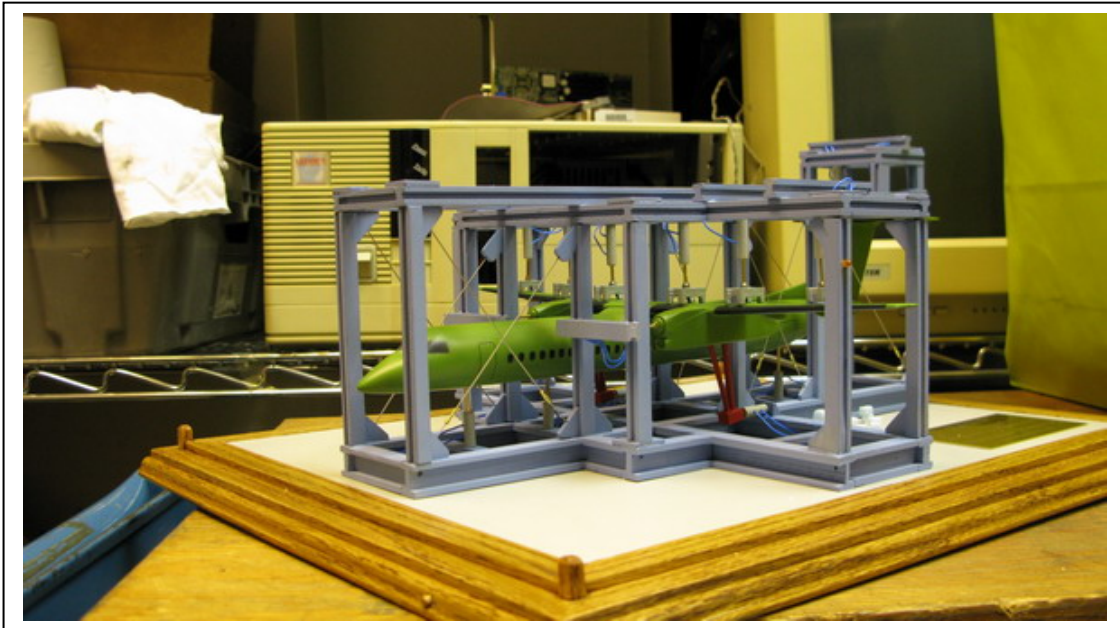




On The Table, continued



Here is Sandy McRorie's 1/35 Accurate Armour kit of the FV4101 Charioteer tank destroyer.



Our final item for June is the completed model of the Dash 8 Q400 Fatigue Test Rig by Bruno Campoli.

Upcoming Events:

- | | |
|-----------|--------------------------------------------|
| Feb 21/10 | HeritageCon IV, CWH Museum, Hamilton, Ont. |
| Mar 07/10 | WellCoMe XIV, Guelph, Ont. |
| May 29/10 | Torcan, CNIB Centre, Toronto, Ont. |
| Oct 02/10 | London Scale Model Show, London, Ont. |



On The Table: The September Meeting



Iain Fraser's 1/72 Jagdpanzer 38 Hetzer with 'Ambush' camouflage scheme. UM kit built OOB selecting parts for the mid-production variant. Tamiya paints and oil wash/dry brush weathering.

Derek's 1/48 Douglas AEW Skyraider. The old ESCI kit built OOB for the Hyperscale US Navy and Marines group build.

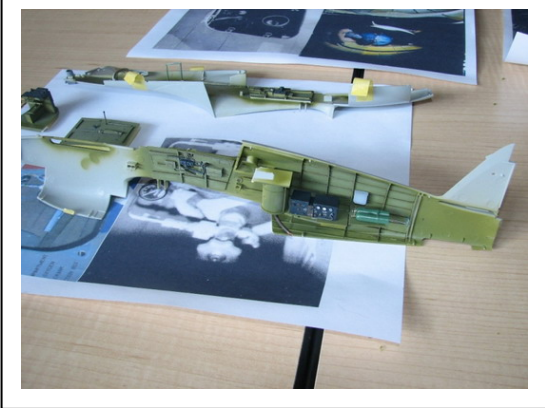


Phil Tunbridge built this Grumman J2F-6 Duck using the Airfix 1/72 kit to develop rigging techniques. It is finished in Model-Master paint as the "Murphy's War" aircraft complete with tea towel wing patch.

Sandy McRorie brought a 1/35 URSUS-A truck by Armo, carrying a TKS Tankette by Mirage. Sandy offered this as a display of his determination to make a 'twisted resin' kit bow to his will and make good.

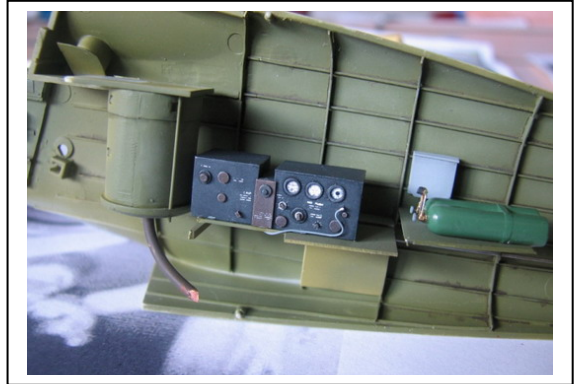


September, continued:



Wayne is building a photo reconnaissance version used briefly by the RCAF in WWII.

1/32 Trumpeter Tomahawk IIb by Wayne Bowman, a WIP, showing scratchbuilt interior stuff. Wayne is also correcting an interior 'depth' issue.



On The Shelves:

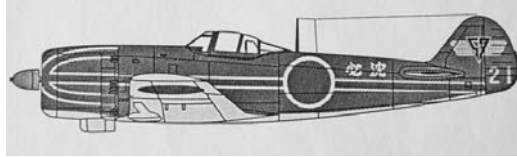
Here are some new products that have been spotted at local retailers or on the web:

Subject	Scale	Mfg'r
Vought F-8J Crusader	1/32	Trumpeter
Su-30MKK (Flanker G)	1/32	Trumpeter
Supermarine Spitfire Mk IXc	1/32	Tamiya
EE Canberra B(I) 8	1/72	Airfix
EE Canberra PR.9	1/72	Airfix
Messerschmitt Bf-109G-6	1/72	Airfix
Cessna AT-17/UC-78/JRC-1/T-50 'Bamboo Bomber'	1/48	Czech Model
Vought A-7A Corsair II	1/48	Hobby Boss
Lockheed/Martin F-22A Raptor	1/72	Hobby Boss
Sea Harrier FA.2 (Hi-Tech)	1/72	Special Hobby
Sd.Kfz.251/3 Ausf. C Radio Command Variant	1/35	AFV Club
T-34/76 1942 Factory 112 full interior	1/35	AFV Club
KZKT-537L Tractor	1/35	Trumpeter
German Railway Gondola (high sides)	1/35	Trumpeter
3.7cm Flak43 Flakpanzer IV Ostwind	1/35	Trumpeter
3.7cm Flak37 Auf Selbstfahrlafette (Sd.Kfz 7/2 late) with Sd. Anhänger 52	1/35	Trumpeter
3.7cm Flak43 Auf Selbstfahrlafette (Sd.Kfz 7/2) with Sd. Anhänger 52	1/35	Trumpeter
IJN Submarine I-53 & Kaiten 'Kamikaze' Torpedoes	1/72	Lindberg

Build Bytes

By Terry Cooper

Building the Hasegawa 1/72nd scale Nakajima KI-84 “Hayate”

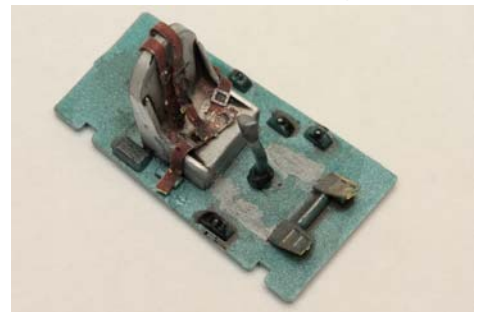


I was looking through my decal stash for some markings for the F4F-3 I built earlier this year when I came upon an Aero Master set for the Hayate. One of the options was an aircraft from the Japanese 57th Special Attack Company Home Island 1945. What drew me to build the aircraft was the fact that it was not your usual Japanese WWII colour scheme of IJN green, IJAAF green or IJN Ivory. This particular aircraft had Black upper surfaces with a natural metal underside. Added to this some rather colourful squadron markings made it my next project. I next went to my collection of plastic kits firmly believing I had a Hayate kit hidden in the stash. This proved to be wrong and so I went in search of a suitably priced kit. I succeeded in getting one for \$10 at Wel*co*me.

The Hayate or Hurricane was given the nickname of Frank by the USA. The Americans considered this aircraft the best Japanese fighter to appear in the Pacific. It was powered by a 2000 HP engine which gave it a top speed of 624 Km/hr. Combine this with excellent maneuverability and 2 x 20mm cannons and 2 x 12.7mm machine guns and you have very potent fighter.

The kit comes with two sprues in grey plastic and one clear. The build instructions are typical early Hasegawa, very basic on one sheet of paper. Since the moulds have been around a while there is a mix of fine raised and scribed panel lines. However there is very little flash in evidence. Since this kit has been reissued it also comes with a second instruction sheet which depicts the colour schemes that match the decals provided. A nice touch is that the clear sprue is packaged in a separate clear plastic bag, along with the decals and build instructions. This ensures that the canopy does not get scratched during shipping and handling.

Construction begins with the cockpit and since the canopy is a one piece there is no need to go crazy detailing the interior. I first sprayed the insides of the fuselage and the cockpit floor the unique metallic green colour common to Japanese aircraft. The seat is bare metal so I painted it aluminum. When the paint was dry I attached the seat to the floor. I painted the control column and installed it in the floor. I then made a black/brown wash from acrylics and liberally applied this to the seat and floor. While this was drying I painted a set of the “True details” Japanese seat belts and rudder pedals.



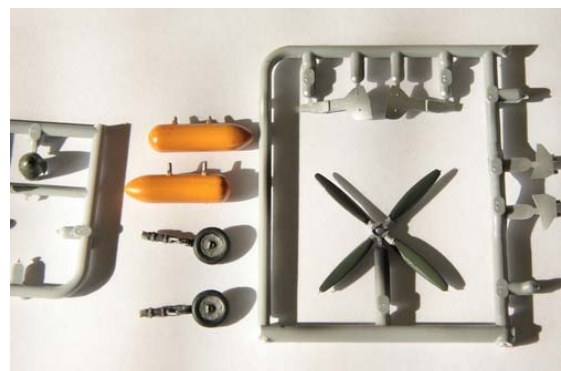


Next I painted the instrument panel black and when dry applied the kit decal for the gauges. I test fitted the floor in the fuselage to ensure there were no fit problems. I did the same to the instrument panel and found that the location in the fuselage was not wide enough to accept the gunsight, which is integral with the instrument panel. A little judicious filing fixed the problem. I then assembled the fuselage halves, the floor panel assembly and the instrument panel together. The fit is very good with no filler needed. The wings are in three parts, left and right upper panels and a complete lower wing. These parts fit together well and when offered to the fuselage the fit is also very good. I next assembled the two parts that make up the engine and painted it silver. When this was dry I gave it a liberal coating of the wash used earlier. When this was dry I installed it in the fuselage. I then added the front cowling, oil cooler and horizontal stabilizer. Again the fit was very good. I then cleaned up all the joints and made the model ready for paint.

Since the aircraft will have black upper surfaces I wanted to ensure that the white "home defence" bands on the wings were white and the leading edge identification markings remained yellow. To ensure this I painted these areas before the application of the black paint. When these were dry I masked the appropriate areas and applied a coat of interior black to the upper surfaces. When this was dry I masked the demarcation lines for the undersides and applied a coat of Humbrol metallic silver. When this was dry I removed the masking.



This aircraft was bare metal underneath so I wanted to differentiate between the colours of the various panels. To do this I masked off individual panels and then added various other metallic colours to the original aluminum base colour to obtain the desired effect.



I then painted the undercarriage, undercarriage doors, drop tanks, propeller and spinner the appropriate colours.

With this completed, the aircraft was ready for the decals. This aircraft has extensive red and white striping on the fuselage, 6 decals per side, which turned into 8 after applying the base white stripes. I cut the red cowling stripes into three pieces in order to get the decals to follow the contour and line up correctly with the white stripes. If I did this aircraft again I would cut the white stripes similarly. This colour scheme has quite a few decals to apply but fortunately they all went on without too much hassle and responded well to liberal coats of Solvaset

Once the decals had dried I mixed up a wash of very dark gray, outlined the panel lines, and applied it to the undercarriage bays and undercarriage doors. When this was dry I applied a coat of Humbrol satin to protect the decals and to give the model an almost flat finish. Next I added some paint chips and wear areas using a silver pencil. With this completed I installed the undercarriage, undercarriage doors, drop tanks, propeller and canopy.

I decided to do the canopy frames using decals instead of masking the glass sections and then spray paint the exposed frames. To achieve this I cut out a section of clear decal film and sprayed it first with the interior colour and when this was dry I applied a coat of flat interior black mixed with Humbrol satin. The next day when this paint had fully cured I cut thin strips of the painted decal film using a sharp knife. These strips were cut to match the width and length of the individual canopy frames. These were then applied to the canopy in the appropriate places. Lots of Solvaset was required to get them to conform to the required shapes.

To complete the model I stretched some sprue to add the antenna wires. Three were required, one from the mast to the fin, one just aft of the mast to the right hand tail plane and lastly one from just aft of the mast to the right hand side of the fuselage. This proved to be a very frustrating exercise. This was mainly due to the sprue not shrinking but melting with heat after they had been applied to the aircraft. It took four complete attempts to finally get all three wires in place.





References: Famous airplanes of the world – Army type 4 Fighter “Hayate”
Osprey books – Aircam #029 Nakajima Ki-84 Hayate in JAAF.

Corrections:



In the mad hustle of meeting the deadline, the Senior Graphics/Layout/Publishing Editor missed a “Typo” on the wonderfully laid out cover of the 38th Edition. Terry Cooper’s Tiger Striped Mig-29UB was misidentified as a Mig-26UB. The entire editorial staff wishes to express our sincere apologies to Mr Cooper. To discourage this type of situation from reoccurring, the offending Editor has been dutifully flogged with 72nd scale stretched sprue and forced to perform Community Service by counting and re-categorizing the Club President’s Kit Stash.

Cruel? Yes, but appropriate.



From the Field: US Nationals 2009

Photos courtesy of Wayne Bowman





From the Field: US Nationals 2009

Photos courtesy of Wayne Bowman



DH Scale is the chapter newsletter produced by and for IPMS de Havilland Scale Modellers (ESC). For any questions please call:

Iain @ X7259

or email at iain.fraser@aero.bombardier.com